

Simple One-button Light Dimmer with Intruder Deterrent

Author: C. R. Tolken
Pace Teletronic Components
Arcadza South Africa
ctolken@pixie.co.za

INTRODUCTION

Simple light dimmer replacing electromechanical devices using one button for off/on and dimming. On special mode setting a random pseudo/random program is started switching the connected light on and off after dawn. PWM output drives the Diac & Triac. Zero crossing detection as enhancement.

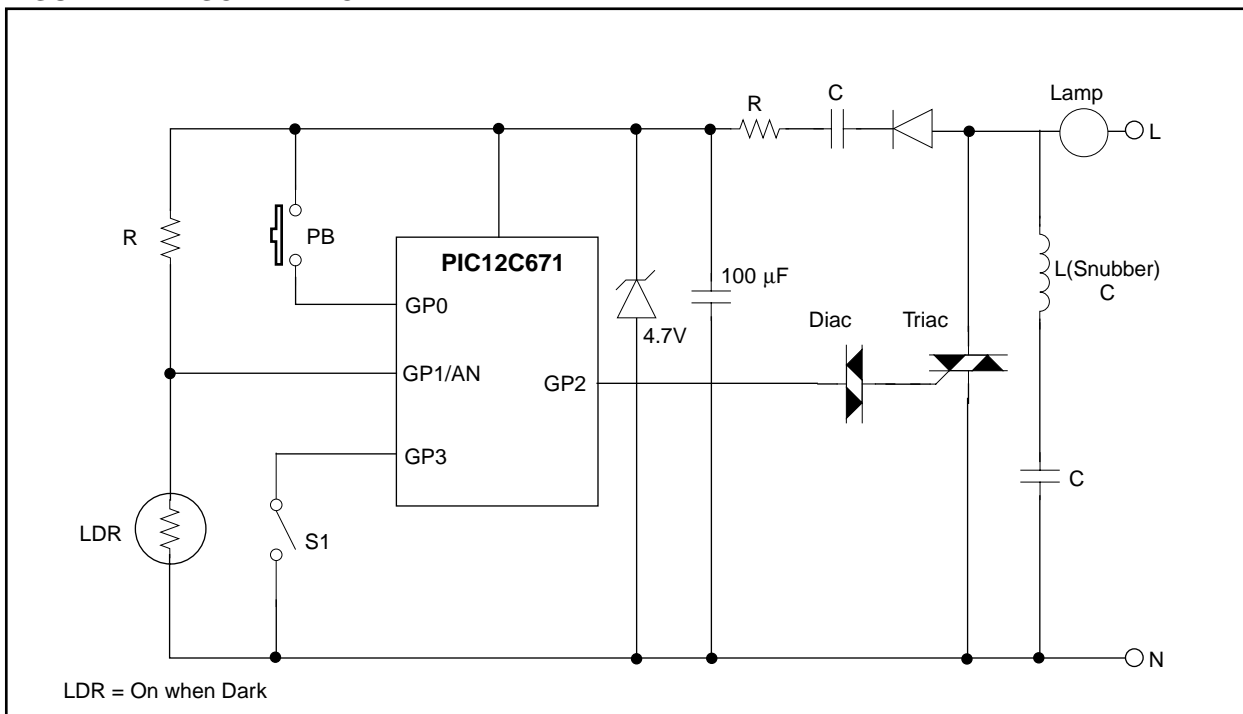
Quick Operation

On press of the push-button, the PICmicro™ checks the duration of the press. If the press is < 500 ms, then the lamp status is changed. If the press is > 500 ms, the PICmicro reverts to cycling mode. If the cycle is upwards, the lamp brightens until it reaches maximum, upon which the lamp dims until minimum. This continues until the push-button is released.

Deterrent Mode

When darkness triggers the LDR and S1 is closed, then a random time is generated - from 1 to 3 hours. Within this time, another random timer (minutes) switches the lamp "on and off", thus creating the impression there is activity in the room. After the hour timer terminates, the lamp stays off permanently.

FIGURE 1: SCHEMATIC



Microchip Technology Incorporated, has been granted a nonexclusive, worldwide license to reproduce, publish and distribute all submitted materials, in either original or edited form. The author has affirmed that this work is an original, unpublished work and that he/she owns all rights to such work. All property rights, such as patents, copyrights and trademarks remain with the author.

FIGURE 2: FLOWCHART

