

8ch HIGH-VOLTAGE HIGH SOURCE-CURRENT DRIVER

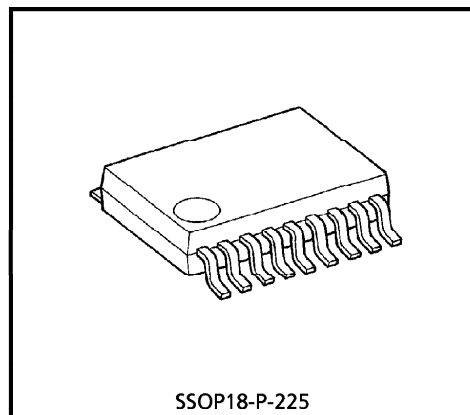
The TD62783AFN, TD62784AFN are comprised of eight source current Transistor Array.

These drivers are specifically designed for fluorescent display applications.

Applications include relay, hammer and lamp and display (LED) drivers.

FEATURES

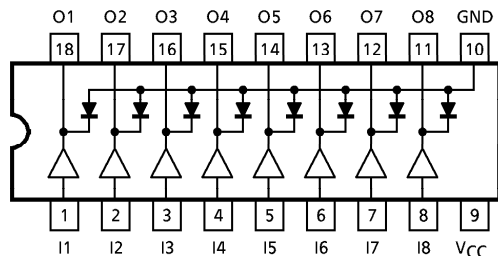
- Package Type : SSOP18 PIN
- High Output Voltage : $V_{CE(SUS)} = 50V$ (MIN.)
- Output Current (Single Output) : $I_{OUT} = -500mA$ (MAX.)
- Output Clamp Diodes
- Single Supply Voltage
- Input Compatible with Various Types of Logic



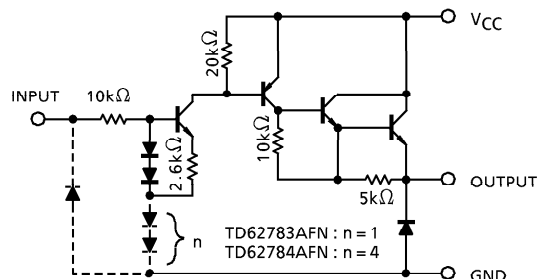
Weight : 0.09g (Typ.)

TYPE	DESIGNATION
TD62783AFN	TTL, 5V CMOS
TD62784AFN	6~15V PMOS, CMOS

PIN CONNECTION (TOP VIEW)



SCHEMATICS (EACH DRIVER)



(Note) The input and output parasitic diodes cannot be used as clamp diodes.

© The information contained herein is presented only as a guide for the applications of our products. No responsibility is assumed by TOSHIBA CORPORATION for any infringements of intellectual property or other rights of the third parties which may result from its use. No license is granted by implication or otherwise under any intellectual property or other rights of TOSHIBA CORPORATION or others.

© These TOSHIBA products are intended for use in general commercial applications (office equipment, communication equipment, measuring equipment, domestic appliances, etc.). please make sure that you consult with us before you use these TOSHIBA products in equipment which requires extraordinarily high quality and/or reliability, and in equipment which may involve life threatening or critical application, including but not limited to such uses as atomic energy control, airplane or spaceship instrumentation, traffic signals, medical instrumentation, combustion control, all types of safety devices, etc. TOSHIBA cannot accept and hereby disclaims liability for any damage which may occur in case the TOSHIBA products are used in such equipment or applications without prior consultation with TOSHIBA.

MAXIMUM RATINGS (Ta = 25°C)

CHARACTERISTIC	SYMBOL	RATING	UNIT
Supply Voltage	V _{CC}	50	V
Output Current	I _{OUT}	- 500	mA / ch
Input Voltage	V _{IN} (*1)	15	V
	V _{IN} (*2)	30	
Clamp Diode Reverse Voltage	V _R	50	V
Clamp Diode Forward Current	I _F	500	mA
Power Dissipation	P _D (*3)	0.96	W
Operating Temperature	T _{opr}	- 40~85	°C
Storage Temperature	T _{stg}	- 55~150	°C

(*1) TD62783AFN

(*2) TD62784AFN

(*3) On Glass Epoxy PCB (50 × 50 × 1.6mm Cu 40%)

RECOMMENDED OPERATING CONDITIONS (Ta = - 40~85°C)

CHARACTERISTIC		SYMBOL	CONDITION	MIN.	TYP.	MAX.	UNIT
Supply Voltage		V _{CC}		—	—	50	V
Output Current	(*3)	I _{OUT}	DC 1 Circuit	—	—	- 350	mA / ch
			T _{pw} = 25ms, T _j = 120°C Ta = 85°C, 8 Circuits	Duty = 10%	—	—	
Input Voltage		(*1) (*2)	V _{IN}		—	—	12
					—	—	24
Input Voltage	Output ON	(*1) (*2)	V _{IN} (ON)		2.0	5.0	15
					4.5	12.0	30
	Output OFF	(*1) (*2)	V _{IN} (OFF)		0	—	0.8
					0	—	2.0
Clamp Diode Reverse Voltage		V _R		—	—	50	V
Clamp Diode Forward Current		I _F		—	—	400	mA
Power Dissipation		(*3) P _D		—	—	0.4	W

(*1) TD62783AFN

(*2) TD62784AFN

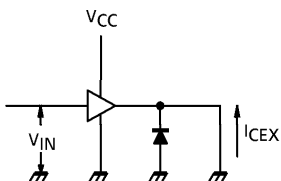
(*3) On Glass Epoxy PCB (50 × 50 × 1.6mm Cu 40%)

ELECTRICAL CHARACTERISTICS (Ta = 25°C)

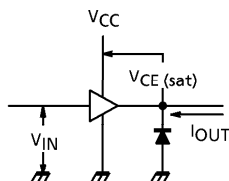
CHARACTERISTIC		SYMBOL	TEST CIR-CUIT	TEST CONDITION	MIN.	TYP.	MAX.	UNIT
Output Leakage Current		I _{CEX}	1	V _{CC} = V _{CC} MAX, V _{IN} = 0.4V Ta = 25°C	—	—	100	μA
Output Saturation Voltage		V _{CE (sat)}	2	V _{IN} = V _{IN (ON)} , I _{OUT} = - 350mA	—	—	2.0	V
				V _{IN} = V _{IN (ON)} , I _{OUT} = - 225mA	—	—	1.9	
				V _{IN} = V _{IN (ON)} , I _{OUT} = - 100mA	—	—	1.8	
Input Current	TD62783AFN	I _{IN (ON)}	3	V _{IN} = 2.4V	—	36	52	μA
	TD62784AFN			V _{IN} = 3.85V	—	180	260	
				V _{IN} = 5V	—	92	130	
				V _{IN} = 12V	—	790	1130	
Input Voltage	TD62783AFN	V _{IN (ON)}	4	V _{CE} = 2.0V	—	—	2.0	V
	TD62784AFN			I _{OUT} = - 350mA	—	—	4.5	
	TD62783AFN	V _{IN (OFF)}		I _{OUT} = - 500μA	0.8	—	—	
	TD62784AFN				2.0	—	—	
Supply Current		I _{CC (ON)}	3	V _{IN} = V _{IN (ON)} , V _{CC} = - 50V	—	—	2.5	mA/ch
Clamp Diode Reverse Current		I _R	5	V _R = 50V	—	—	50	μA
Clamp Diode Forward Voltage		V _F	6	I _F = 350mA	—	—	2.0	V
Turn-On Delay		t _{ON}	7	V _{CC} = V _{CC} MAX, R _L = 125Ω C _L = 15pF	—	0.15	—	μs
Turn-Off Delay		t _{OFF}			—	3.0	—	

TEST CIRCUIT

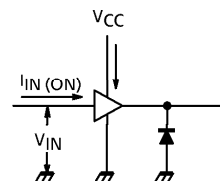
1. I_{CEX}



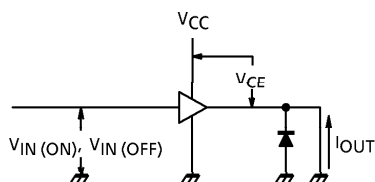
2. $V_{CE(sat)}$



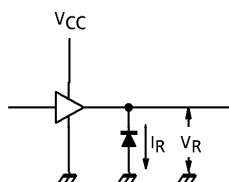
3. $I_{IN(ON)}, I_{CC}$



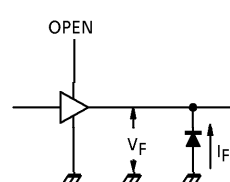
4. $V_{IN(ON)}, V_{IN(OFF)}$



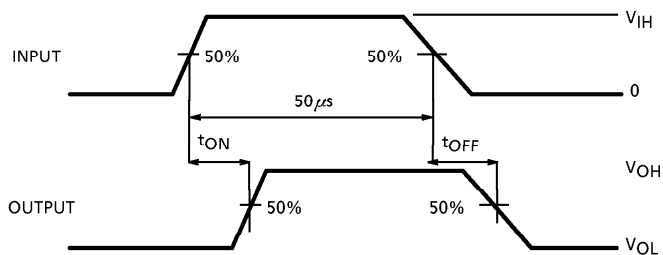
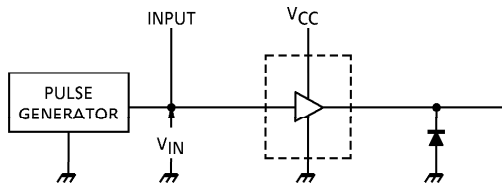
5. I_R



6. V_F

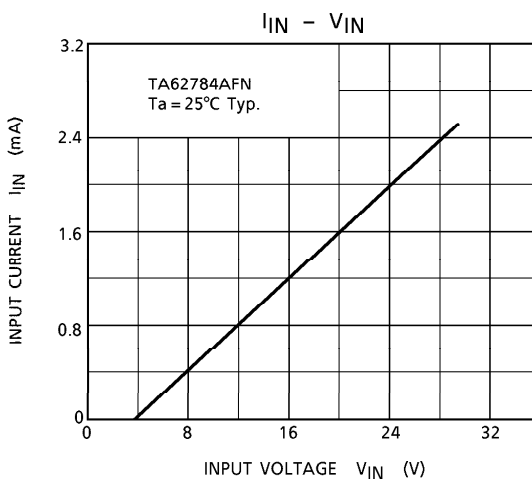
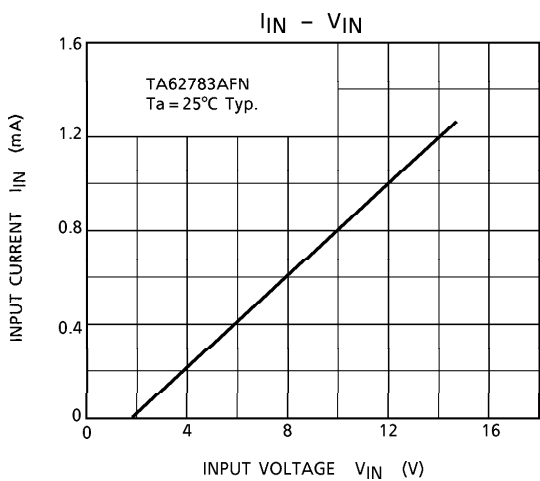
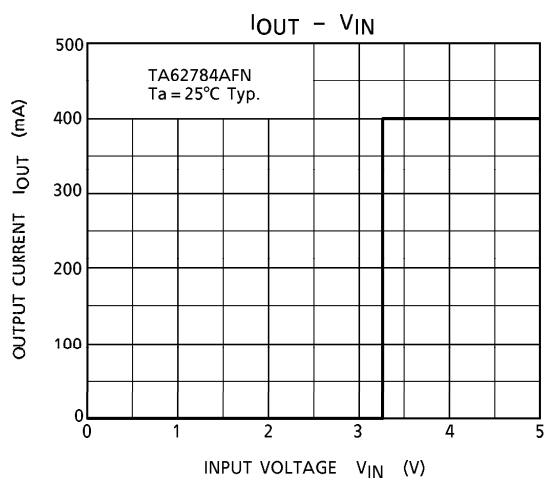
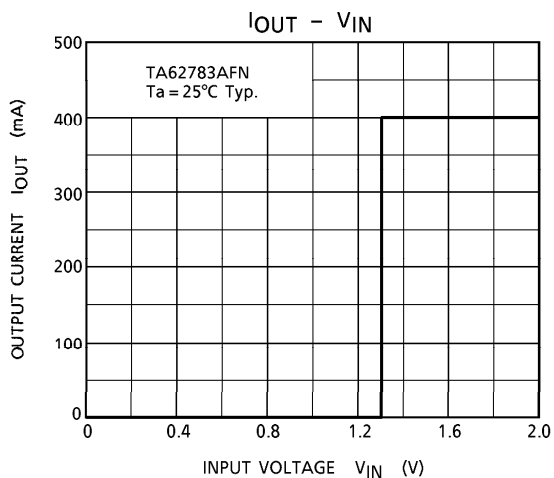


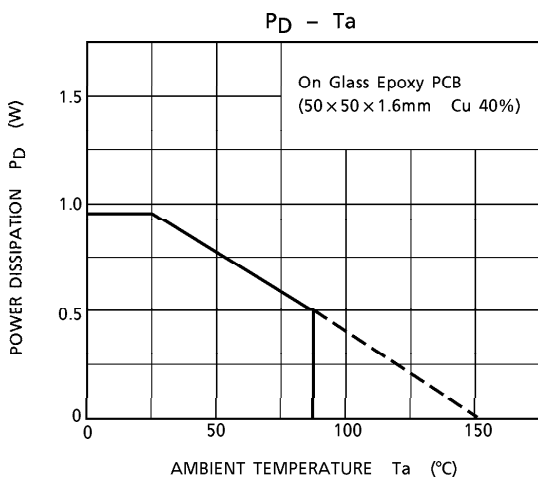
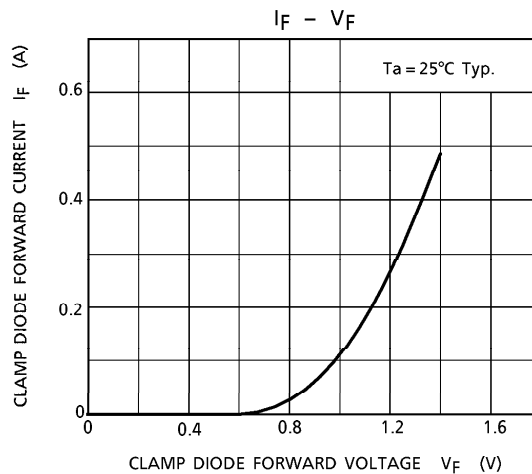
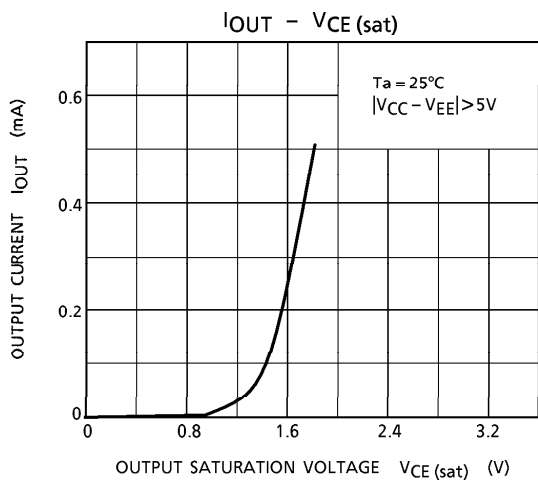
7. t_{ON}, t_{OFF}



(Note 1) Pulse Width $50\mu s$, Duty Cycle 10%
Output Impedance 50Ω , $t_r \leq 5ns$, $t_f \leq 10ns$

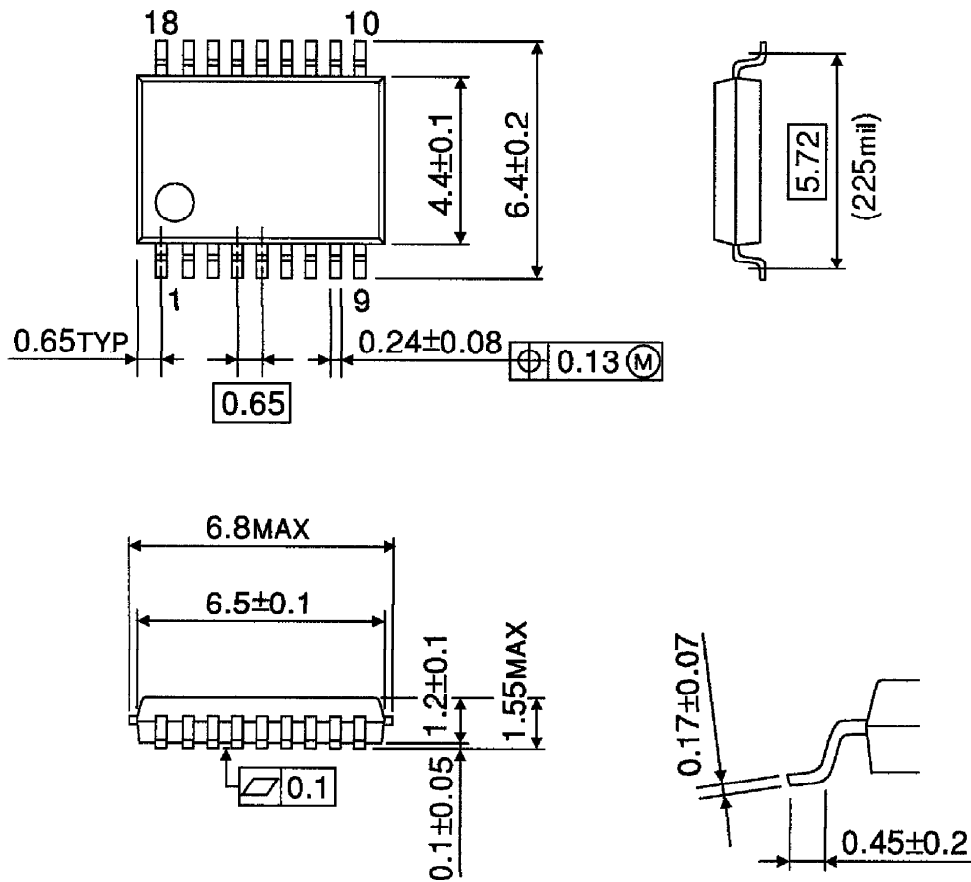
(Note 2) CL includes probe and jig capacitance.





OUTLINE DRAWING
SSOP18-P-225

Unit : mm



Weight : 0.09g (Typ.)